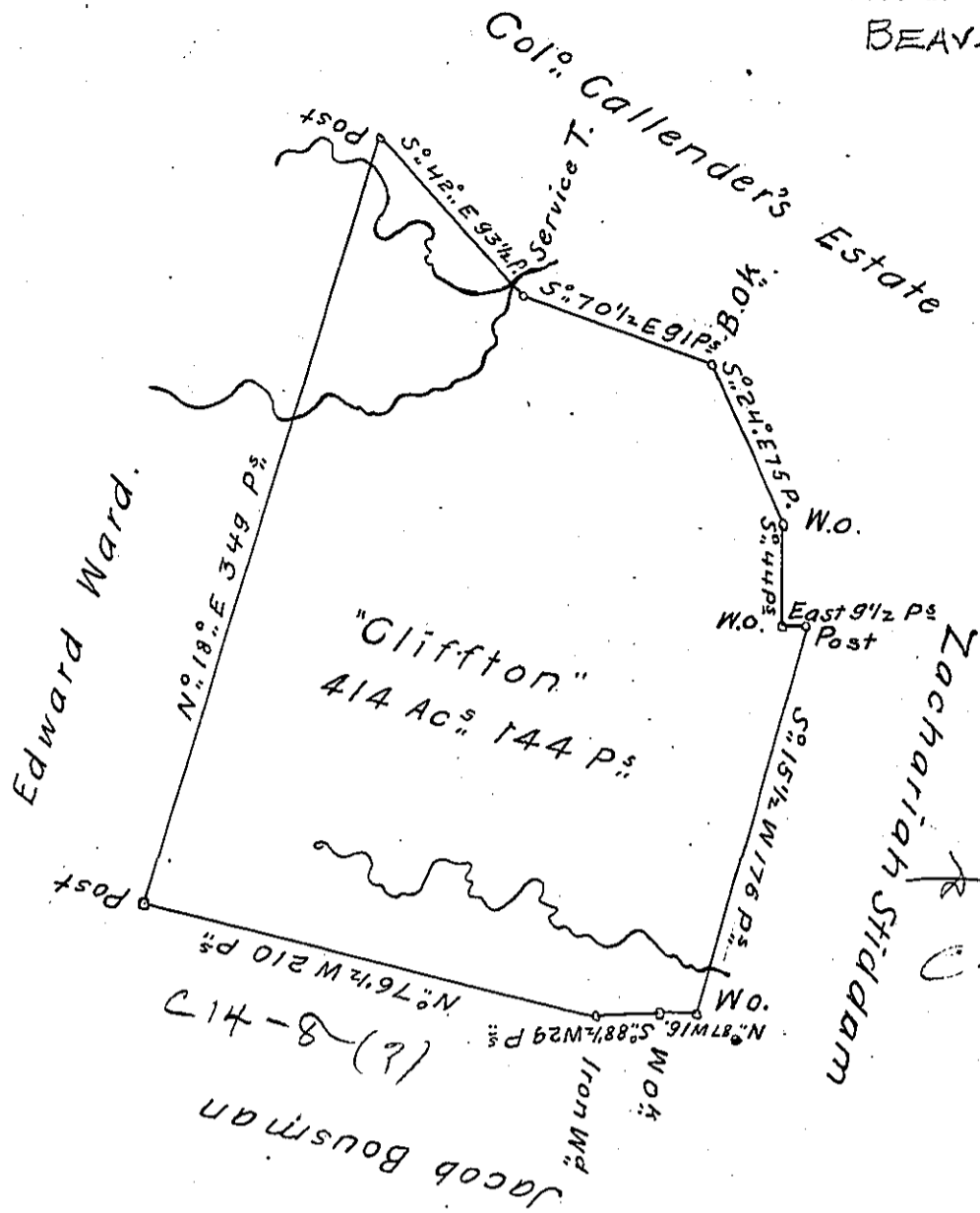


Center  
BEAV. Co. H11-465

55



561-83  
C-174-228

A Draught of a Survey called "Cliffton" situate on the waters of Elk Horn Run in Washington County contg. 414 Ac. 144 P. and y<sup>e</sup> usual allow<sup>ce</sup> for Highways & C<sup>o</sup> executed y<sup>e</sup> 12<sup>th</sup> of Sept<sup>r</sup> 1787 in Pursuance of a Warr<sup>t</sup> granted to John Clifford for 400 Ac. dated Decm<sup>r</sup> 20<sup>th</sup> 1785

Jn<sup>o</sup>. Lukens Esq<sup>r</sup>. S. Gen<sup>l</sup>.

Presley Nevill }  
Matt<sup>r</sup>. Ritchie } D.Ss.

IN TESTIMONY that the above is a copy of the original remaining on file in the Department of Internal Affairs of Pennsylvania, made conformably to an Act of Assembly approved the 16th day of February, 1833, I have hereunto set my Hand and caused the Seal of said Department to be affixed at Harrisburg, this sixth day of May 1904.

*Joseph B. Brown*  
Secretary of Internal Affairs.